



# MS4 – It's Not Just for DPW Any More

COLAP

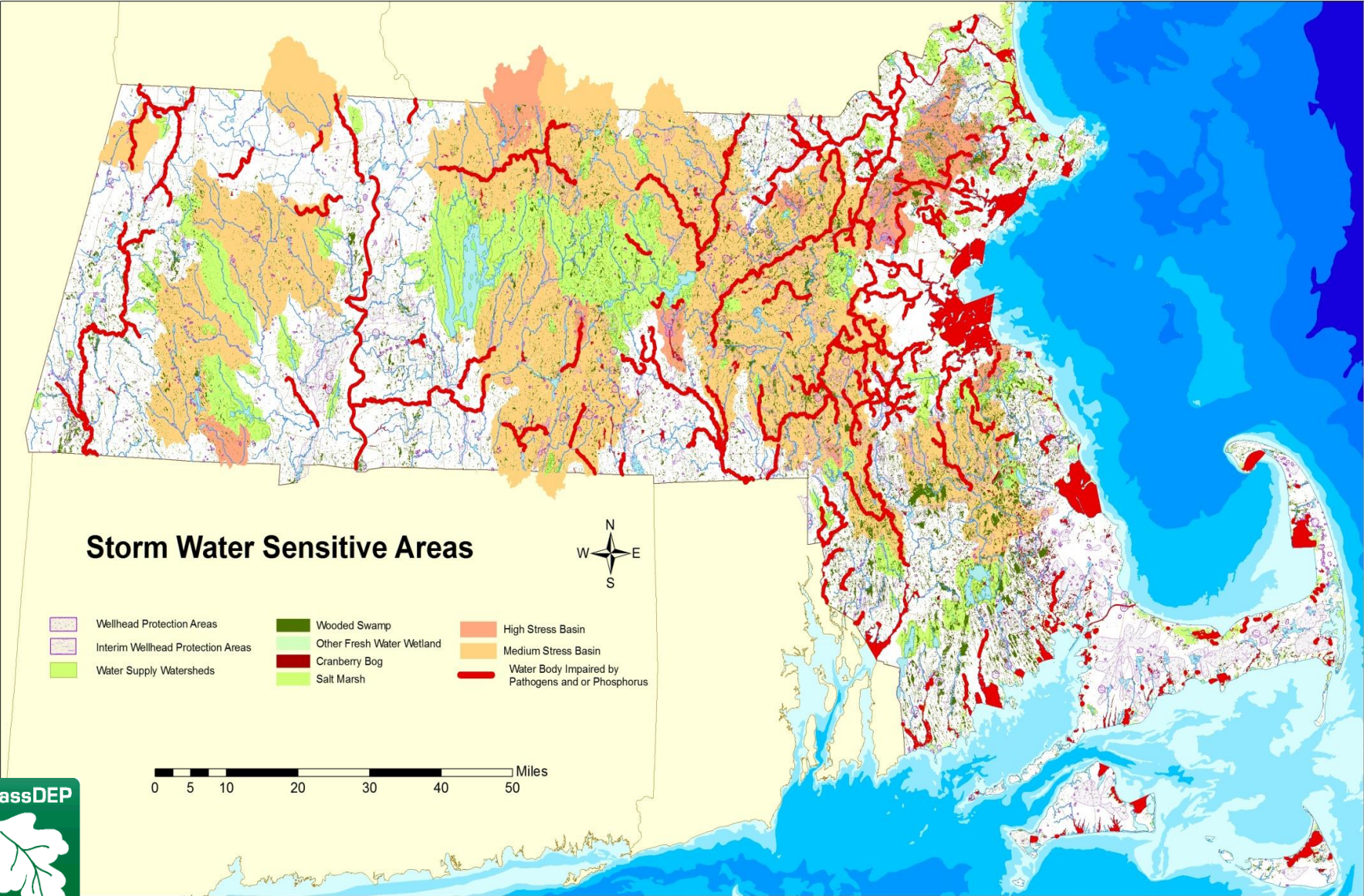
April 12, 2019

[Frederick.Civian@state.ma.us](mailto:Frederick.Civian@state.ma.us)

# Why Stormwater?

- Single largest source of water pollution statewide
- ~50% of watersheds don't have enough water in summer
- More "Impervious Cover" = more pollutants
- NO TREATMENT provided in municipal stormwater collection systems

# Massachusetts Sensitive Areas



# New MS4 (Municipal Separate Storm Sewer System) Permit

- Requirements:
  - Meet the 6 minimum control measures
  - Begin TMDL implementation
- Different from the 2003 MS4 permit . . .
  - Cost increases
  - Moving away from a BMP-based program
  - Many administrative and reporting requirements
  - (mostly) uses the MA SW Standards

# What parts of Town are responsible for MS4 work?

- DPW
- Schools
- Planning Board
- Building Inspection
- GIS
- Others?

# New MS4 (Municipal Separate Storm Sewer System) Permit

## 6 minimum control measures

- Illicit Discharge Detection and Elimination
- “Good Housekeeping” – care of town SW system
- Public Education
- Public Involvement
- (changes to) local SW Construction rules
- (changes to) local SW “post-construction” rules

Plus “TMDLs”

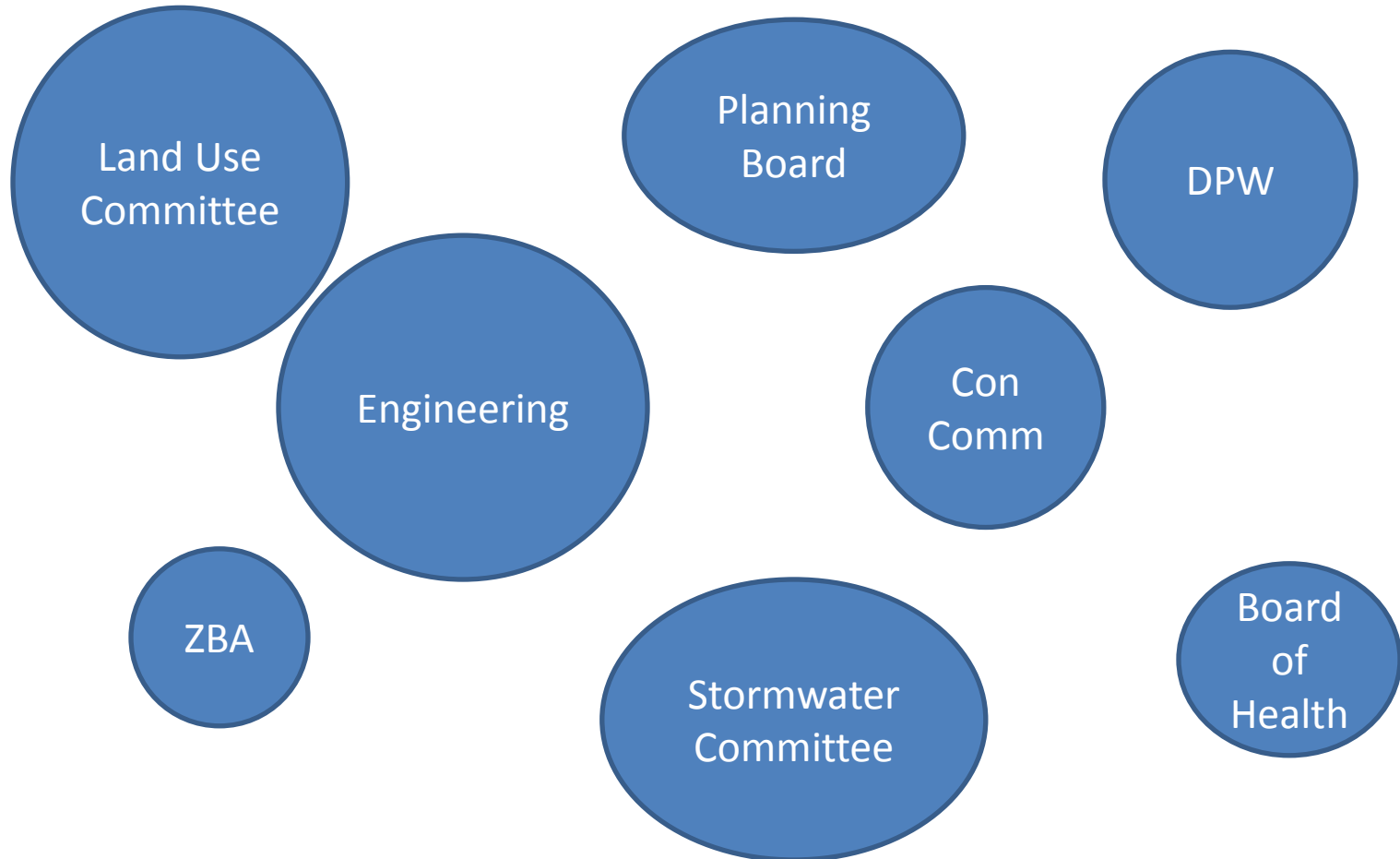
# July 1, 2020

## Possible municipal paths: Update Bylaws and Ordinances

1. Specify that stricter standard must be met?
2. What is geographic threshold for local rules?
3. Use the MA SW Standards, as amended?
4. Develop one's own set of stormwater rules?



# What Town Department or Committee is responsible for compliance with the MS4 stormwater post-construction bylaw?





# New MS4 (Municipal Separate Storm Sewer System) Permit

## 6 minimum control measures

- Illicit Discharge Detection and Elimination
- “Good Housekeeping” – care of town SW system
- Public Education
- Public Involvement
- (changes to) local SW Construction rules
- (changes to) local SW “post-construction” rules

Plus “TMDLs”

# Lakes and Ponds TMDLs

- Total Maximum Daily Load
- Appendix F of the MS4 permit
- Affects 20 Towns
- LPCPs: requires specific reductions of Phosphorus over 15 years starting July 1, 2018
  - Years 1-5 : planning
  - Year 6 – “non-structural” controls full implementation
  - Year 8 – Begin phasing in “structural” controls
  - Years 10, 13 – meet reduction benchmarks
  - Year 15 – reductions achieved